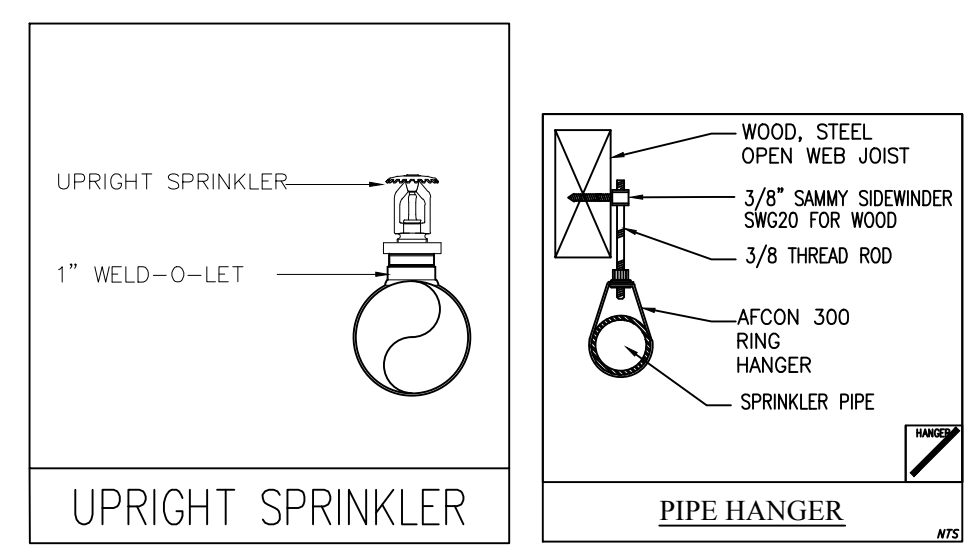
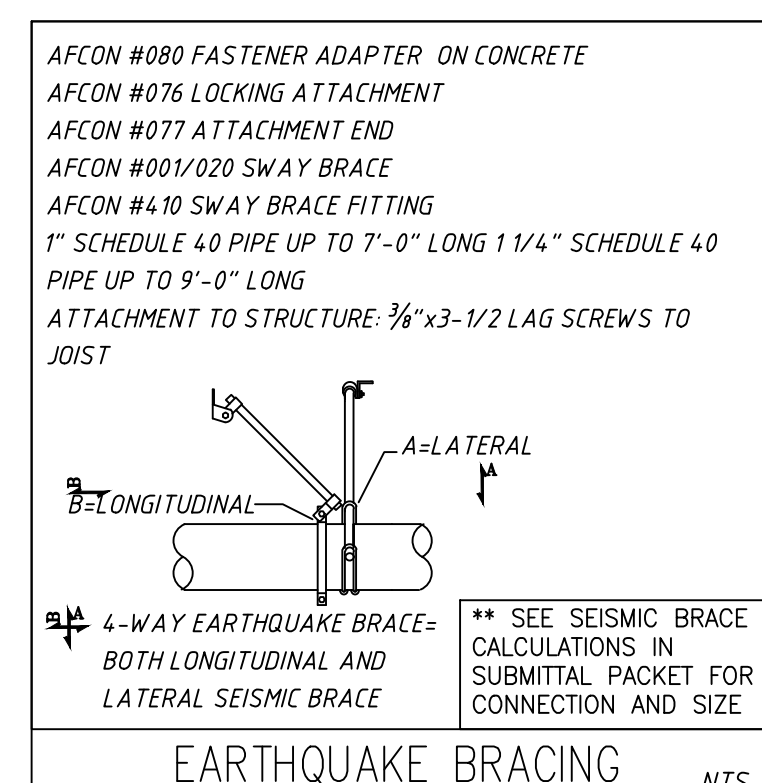
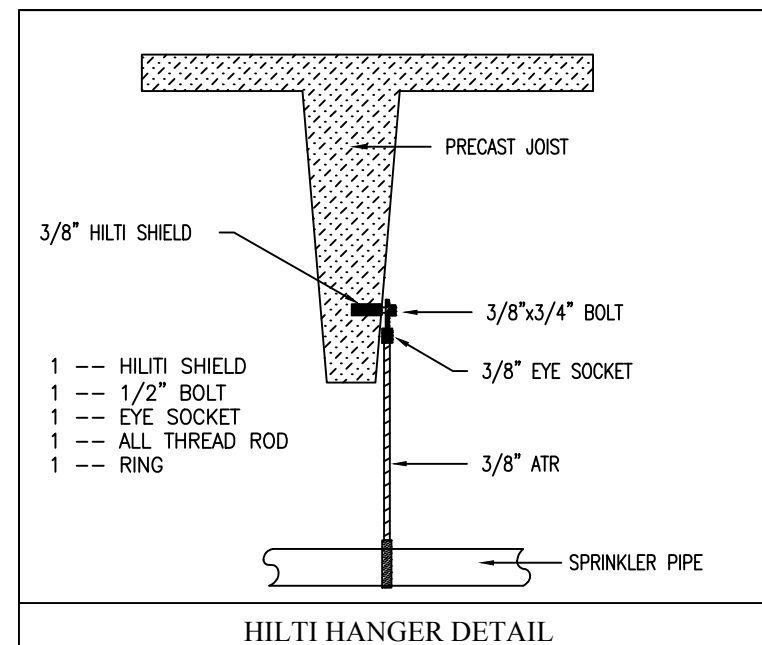
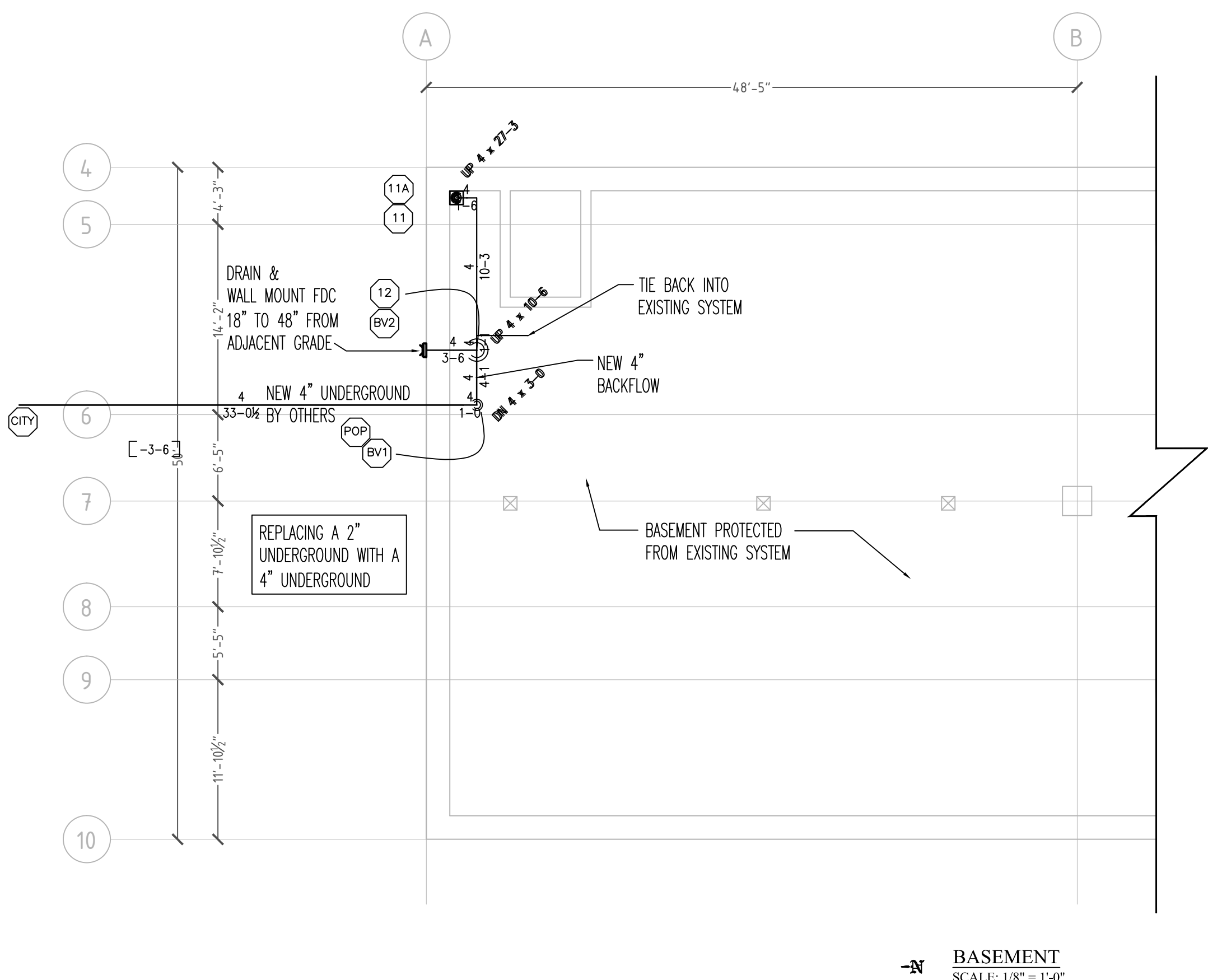


**HYDRAULICALLY CALCULATED SYSTEM**  
This system as shown on SECOND FLOOR, SE CORNER company print no. S14-076, date: 05-13-2014 for: YALE UNION BUILDING at: PORTLAND, OREGON contract no: N/A is designed to discharge at a rate of: 0.20 gpm per sq ft of floor area over a maximum area of 1500 sq ft when supplied with water at the rate of: 625.1 gpm at 59.1 psi at the base of the riser. Hose stream allowance of 250 gpm is included in the above. Occupancy classification: OH II Commodity classification: N/A Maximum storage height: 12' Installed by: EXPRESS FIRE SYSTEMS, INC.



**DESIGN CRITERIA AND NOTES**

1. EXPRESS FIRE SYSTEMS, INC. MODIFY EXISTING FIRE SPRINKLER SYSTEM FOR YALE UNION BUILDING - PARTIAL SHELL START AT THE NEW 4" RISER (WAS 2" SUPPLY)
2. INSTALLATION PER NFPA 13 2010 EDITION.
3. BUILDING TYPE: COMBUSTIBLE CONSTRUCTION
4. SCH 10 IMPORT BLACK STEEL PIPE: 1-1/2" AND LARGER
5. SCH 40 IMPORT BLACK STEEL PIPE: 1-1/4" AND SMALLER
6. ALL ELECTRICAL, MONITORING, UNDERGROUND PIPING BY OTHERS PER CODE
7. SEE ARCHITECT PLANS FOR FIRE RATED WALLS/FLOORS
8. AREA OF WORK: 1500 SQ.FT. ON SECOND FLOOR IN THE PRODUCTION AREA
9. OCCUPANCY: ORDINARY HAZARD II
10. ADDITION TO THE WET SYSTEM

WATER SOURCE: CITY (CITY OF PORTLAND) 6" CIRCULATED MAIN  
STATIC: 94 PSI (75 PSI DESIGN WITH 19 PSI SAFETY MARGIN)  
RESIDUAL: 64 PSI  
FLOW: 1300 GPM

\* SPRINKLER LAYOUT DESIGNED OVER ARCHITECTS PLAN

<b>PROJECT NAME</b>	
YALE UNION - PARTIAL SHELL 800 SE 10TH AVE. PORTLAND OREGON 97214	
<b>OWNER/OCCUPANT</b>	
YALE UNION CONTEMPORARY 800 SE 10TH AVE. PORTLAND OREGON 97214	
<b>GENERAL CONTRACTOR</b>	
CURTIS KNAPP 503-234-2210	
<b>FIRE PROTECTION CONTRACTOR</b>	
EXPRESS FIRE SYSTEMS, INC. 1913 41 <sup>ST</sup> STREET WASHOUGAL, WA 98671 360-953-8432 CCB# 193272	
<b>DATE</b>	<b>ARCH D</b>
05-15-2014	<b>1 of 2</b>
<b>DESIGNER</b>	<b>CHECKED BY</b>
PSW	JERRY D
<b>JOB NO.</b>	<b>SPRINKLER LAYOUT</b>
S14-076	

REVISIONS		MISC. DEVICE LEGEND	
NO.	DATE BY	DESCRIPTION	

SSU = SPRAY SPRINKLER UPRIGHT	SSP = SPRAY SPRINKLER PENDENT
CC = CONCEALED	SW = SIDEWALL
H = HORIZONTAL	V = VERTICAL
EC = EXTENDED COVERAGE	ELO = EXTRA LARGE ORIFICE
LD = LARGE DROP SPRINKLER	ESFR = EARLY SUPPRESSION FAST RESPONSE
B = BRASS	WH = WHITE
C = CHROME	POP = POINT OF PRESENCE

**Sprinkler Head Schedule**

Symbol	Count	Thread	K-Factor	Description	Note
○	18	1/2"	5.6	V2704 1/2 QR 155 B UP	
18 = Total Number of Heads this floor					

